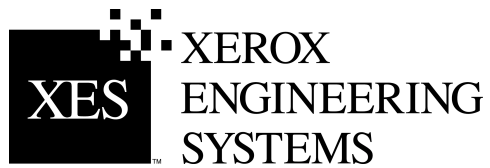


**XES Synergix 8825/8830/8850/8855
HP GL/2 & HP RTL, AutoCAD
2000i Optimized, Print Driver User
Guide**

701P36885 July 2001



This page left intentionally blank.

Trademark Acknowledgments

Windows® 95 and Windows® 98 are registered trademarks of Microsoft Corporation.

Windows NT is a registered trademark of Microsoft Corporation.

Windows® 2000 is a registered trademark of Microsoft Corporation.

Microsoft Word is a copyright protected program of Microsoft Corporation.

HP-GL/2 and HP RTL are registered trademarks of Hewlett-Packard Company.

PageMaker and Acrobat are registered trademarks of Adobe Systems Incorporated.

CorelDRAW is a registered trademark of Corel Corporation.

WinZip is a registered trademark of Nico Mak Computing, Inc.

AutoCAD is a registered trademark of AutoDesk, Inc.

XEROX®, XES Synergix 8855 and 8855 Digital Solution, XES Synergix 8850 and 8850 Digital Solution, XES Synergix 8825 and 8825 Digital Solution, XES Synergix 8830 and 8830 Digital Solution, XES Synergix Scan System, the digital box icon, AccXES, and the acronym XES are trademarks of XEROX CORPORATION.

Table of Contents

Trademark Acknowledgments	i
Introduction	1
Purpose of this Guide	1
Basic Requirements.....	1
Downloading this Driver from the Internet.....	1
How to Use this Guide	2
Before You Start	3
Check your protocol.....	3
Check your port	3
Creating a Printer Port (NT4.0/2000)	3
Print a PRINTER CONFIGURATION Test Print.....	4
Driver Installation (NT4.0/2000)	5
Driver/Port Installation (95/98)	6
Driver Configuration	7
Accessing the Printer Properties Dialog.....	7
Appearance and Purpose of the Windows 95/98 Printer Properties Dialog	8
Tabs of the Windows 95/98 Printer Properties Dialog.....	9
General Tab	9
Details Tab	10
Sharing Tab.....	11
Paper Tab	12
Job Tab	13
BANNER PAGE.....	13
LABELING	13
RASTER STAMP	14
FINISHING.....	14
PLOT NESTING	15
MEDIA MISMATCH	15
JOB PRIORITY.....	16
Graphics Tab.....	17
Monochrome Tab.....	18
Device Options Tab.....	19

Appearance and Purpose of the NT4.0 Printer Properties Dialog .	21
Tabs of the NT4.0 Printer Properties Dialog	22
General Tab	22
Ports Tab.....	23
Scheduling Tab	24
Sharing Tab.....	25
Security Tab	26
Device Options Tab.....	27
Appearance and Purpose of the Windows 2000 Printer Properties Dialog	29
Tabs of the Windows 2000 Printer Properties Dialog.....	30
General Tab	30
Sharing Tab.....	31
Ports Tab.....	32
Advanced Tab	33
Color Management Tab	34
Security Tab	35
Device Options Tab.....	36

From the Print Command of your Application	38
Accessing the Document Properties Dialog.....	38
IN WINDOWS 95/98/NT 4.0.....	38
IN WINDOWS 2000.....	38
IN AUTOCAD 2000i.....	38
Appearance and Purpose of the Document Properties Dialog	39
SAVING A PC3 FILE IN AUTOCAD 2000i.....	39
Removing the Driver.....	46
Removing the Net Port Monitor	47
Removing the Net Port Monitor	47
Tabs of the Document Properties Dialog	40
Paper Tab	40
Job Tab	41
BANNER PAGE.....	41
LABELING	41
RASTER STAMP.....	41
FINISHING.....	42
PLOT NESTING	42
MEDIA MISMATCH	42
JOB PRIORITY.....	43
Graphics Tab.....	44
Monochrome Tab.....	45

This page left intentionally blank.

Introduction

Purpose of this Guide

The purpose of this Guide is to assist you with instructions for installing the Windows HP-GL/2, AutoCAD 2000i Optimized, Print Driver and Net Port Monitor (if required) on your workstation. This Guide also includes procedures for configuring driver settings to meet your printing needs, and removing the driver or Net Port Monitor when desired.

An electronic copy of this guide is available on the internet at <http://www.xes.com>.

Basic Requirements

A 90 MHz Pentium-compatible workstation, with 32MB of RAM, if running Windows 95/98/NT4.0 with AutoCAD R14 or LT.

A 133 MHz or faster Pentium-compatible workstation, with 32MB of RAM, if running Windows 95/98/NT4/2000 with AutoCAD 2000.

A 133 MHz or faster Pentium-compatible workstation, with 256MB RAM, if running Windows 2000 Server with AutoCAD 2000 (233 MHz minimum for AutoCAD 2000i).

A 233 MHz or faster Pentium-compatible workstation, with 64MB of RAM, if running Windows 95/98/NT4/2000 with AutoCAD 2000i.

A working knowledge of your workstation's operating system.

Windows NT 4.0, build 1381, with Service Pack 3 or newer. Click on "Start," "Programs," "Windows NT Explorer," "Help," "About," to verify this.

Appropriate cabling connecting your workstation to the network or directly to the 8825/8830/8850/8855 printer's AccXES Controller.

Appropriate protocols and ports enabled on both the printer and workstation, with a connection established through the network or directly between the printer and your workstation.

Downloading this Driver from the Internet

To download this driver from the Internet, if required, go to <http://www.xes.com>.

The driver is downloaded as a self-extracting WinZip file. After downloading to your workstation, double click on the driver file to unzip all component files to the default location of "c:\temp" on your hard drive.

How to Use this Guide

1. **Read “Before You Start”** for valuable information on checking the status of your communication protocol and printer port.
2. **Install the driver and Net Port Monitor (if needed) on your workstation** as stated in the Driver Installation section of this Guide.
3. **Configure the driver settings to meet your needs** as stated in the Driver Configuration section of this Guide.
4. **Click OK on the Print Screen** (Windows applications) or the Plot Screen (AutoCAD 2000i) to print your job.
5. If you no longer need the driver, remove the driver as stated in the **Removing the Driver** section of this Guide.
6. If you no longer need the Net Port Monitor, remove it as stated in the **Removing the Net Port Monitor** section of this Guide.

Before You Start

Check your protocol

Before installing this Driver, consider the following:

You will need the TCP/IP protocol installed at BOTH your workstation and the printer's Controller to facilitate communications.

Check the protocols that are currently enabled at your workstation.

For Windows 95/98, right mouse click on "Network Neighborhood," then select "Properties" and check for TCP/IP in the list of installed components.

For Windows NT 4.0, right mouse click on "Network Neighborhood," select "Properties," then left mouse click on the "Protocols" Tab.

For Windows 2000, right mouse click on "My Network Places," select "Properties," right mouse click on "Local Area Connection," and select "Properties."

Check the protocols that are currently enabled at the printer by printing a PRINTER CONFIGURATION Test Print as stated in this Guide.

If you will be changing protocols from an existing working setup, or setting up a new protocol, you should refer to the step-by-step setup instructions provided in the *XES Synergix 8825/8830/8850/8855 Network Administrator's Guide available on the Internet at <http://www.xes.com>*. The Network Administrator's Guide is in Adobe Acrobat format with the name of "admine.pdf." To read this document you will need Adobe Acrobat Reader software, 3.0 or higher, installed on your workstation.

Check your port

For Windows NT 4.0 and 2000, make sure that you have a printer port available on your workstation before starting the driver installation. Click "Start," "Settings," "Printers," "File," "Server Properties" and the "Ports" tab to view the list of available ports.

For Windows 95 and 98, you will be given an opportunity to check available ports, as well as to add an "XES TCP/IP Port," during driver installation.

Creating a Printer Port (NT4.0/2000)

If you do not have an "XES TCP/IP Port" to use with this driver, it is recommended that you create a new printer port on your desktop.

Note: You must have administrator privileges to install or add this port.

1. Begin by clicking "Start," "Settings," "Printers," "File," "Server Properties," "Ports" tab. Click the **Add Port...** button.
2. Click on **New Monitor...** (NT4.0) or **New Port Type...** (2000) to display the "Installing Print Monitor" dialog. Provide the path to your driver files (specifically the file named Monitor.inf) and click **Open**.
3. When the "Installing Print Monitor" screen displays again, indicating the path to the print monitor, click **OK**.
4. When the "Printer Ports" screen displays, indicating the available XES Net Port, click **New Port...** and, when prompted, click **OK**.
5. When the "XES Net Port dialog" displays, enter the TCP/IP address of your printer's Controller in the entry field and click **OK**.
6. Accept the default Timeout value on the displayed "Configuration" dialog and click **OK**.
7. Close the "Printer Ports" window. Close the "Server Properties" dialog.

Before You Start

Print a PRINTER CONFIGURATION Test Print

To check the communication settings of the printer, print a PRINTER CONFIGURATION Test Print as follows:

- While the Printer is NOT printing, from the Web Printer Manager Tool, accessed through a web browser installed on your workstation, select PRINTER DEFAULTS, TEST PRINT.
- Select the **Minimal** button to get a Configuration test print.
- Select the **Back** arrow to return to the Test Print choices screen.
- You can now exit the Web PMT by closing your web browser.

Note: You can also print a test print from the UTILITIES menu of the 8825/8830/8850 Printer Control Panel, as explained in the XES Synergix 8825/8830/8850/8855 System Introduction or the XES Synergix 8825/8830 Controller Setup Manual for Firmware 7.0.

XES 8855 PRINTER - CONFIGURATION

```

CONTROLLER CONFIGURATION
RAM (MB): 64
CPU: PPC740-200
FIRMWARE: 5.0
BUILD NUMBER: 203
FLASH (MB): 4
HARD DISK DRIVE (MB): 8704
POSTSCRIPT PARTITION: NONE
FLOPPY DISK DRIVE: NONE
FAX/MODEM: NONE
NETWORK CARD TYPE: NONE
NETWORK CARD REVISION: NONE
NETWORK CARD HW ADDRESS: XX: XX: XX: XX: XX: XX
ADVANCED NETWORK STATUS: READY
ADVANCED NETWORK HW ADDRESS: 00: 00: AA: 59: 17: A4

OPTIONAL LICENSES
POSTSCRIPT LICENSE: NOT PRESENT
JOB ACCOUNTING LICENSE: STANDARD
SCAN TO NET LICENSE: STANDARD
OPTIONAL FEATURES
POSTSCRIPT ENABLE: OFF
JOB ACCOUNTING ENABLE: ON
SCAN TO NET ENABLE: ON
ERROR LOG:
( 3634512,0000000) ( 0, 21070600) ( 0, 21070600)

PRINT ENGINE CONFIGURATION
FINISHER:
FIRMWARE: 00.00.00-00
READY TO POWER SAVER (MIN): 30
POWER SAVER TO REST (MIN): 90
RESOLUTION (DPI): 400
MAXIMUM PLOT LENGTH (CM): 1597.66
MEDIA MODE: ANS1

MEDIA USAGE
LINEAR: 0
AREA: 0

INSTALLED MEDIA
MANUAL FEED TYPE: BOND
ROLL 1 SIZE: ROLL 24 IN
ROLL 1 TYPE: BOND
ROLL 1 STATUS: FULL
ROLL 2 SIZE: ROLL 36 IN
ROLL 2 TYPE: BOND
ROLL 2 STATUS: FULL
ROLL 3 SIZE: ROLL 17 IN
ROLL 3 TYPE: BOND
ROLL 3 STATUS: FULL
ROLL 4 SIZE: ROLL 11 IN
ROLL 4 TYPE: BOND
ROLL 4 STATUS: LOW

COMMUNICATION PARAMETERS
TCP/IP ENABLE: TCP/IP ADVANCED
TCP/IP IP ADDRESS: 13.142.199.3
TCP/IP SUBNET MASK: 255.255.252.0
TCP/IP DEFAULT GATEWAY: 255.255.255.255
RARP/BOOTP ENABLE: OFF
DHCP ENABLE: OFF
SCSI BUS TERM. ENABLE: ON
SCSI ENABLE: ON
SCSI ID: 5
SERIAL ENABLE: ON
SERIAL BAUDRATE: ON 9600
SERIAL FLOW CONTROL: NONE
SERIAL PARITY: NONE
PARALLEL ENABLE: ON
VPI ENABLE: ON
VPI TIMEOUT ENABLE: OFF

SCANNER CONFIGURATION
TYPE: XES 7356
PRODUCT: 7356
FIRMWARE: 0059
VENDOR: XEROX
SCANNER USAGE (SQ FT): 926
    
```

Figure 1. Typical Printer Configuration Test Print

Driver Installation (NT4.0/2000)

1. Start Windows NT4.0 or Windows 2000 on your workstation.
2. Insert the CD ROM containing this driver, in your language, into your workstation's drive and unzip your driver file (typically accomplished by double clicking on the self-extracting file).
Note: If you downloaded the driver files from the Internet, you can skip this step.
3. On your workstation's desktop, click "Start," "Settings," and "Printers" to open the "Printers" window.
4. From the "Printers" window, double click on the **Add Printer** icon.
5. If the "Add Printer Wizard" introduction screen displays, click **Next**.
6. Click on the **My Computer** (NT4.0) or the **Local printer** (2000) radio button, unless you will be printing through a network server, in which case you should select "Network Printer Server" (NT4.0) or "Network printer" (2000). Deselect (uncheck) the "Automatically detect..." check box in Windows 2000. Click **Next**.
Note: If you selected Network Printer Server (or Network printer), you will have to click Browse (NT4) or Next (2000) to open up the applicable network directories and sub-directories to locate your printer's server.
7. When the "Available Ports" window (NT4.0) or "Select the Printer Port" window (2000) displays, do one of the following:
 - Select an XES TCP/IP port from the displayed list and click **Next**. If you do not have an available XES TCP/IP port, cancel this installation and refer to "Creating a Printer Port" in this Guide.
 - If you selected "Network Printer Server" (or "Network Printer") in step 6 above, you do NOT have to perform this port selection step. Click **Next**.
8. When the "Manufacturers and Printers" window displays, click **Have Disk...** and enter the path to the driver files on your workstation (for

example, the drive letter for your CD ROM drive, or c:\temp for downloaded internet files). Click **OK**.

Note: You can also use the Browse button to locate and select the required ".inf" file.

9. From the displayed list of printers, select XES Synergix 8825/8830/8850/8855 and click **Next**.
10. When prompted, accept the default printer name shown, or use your keyboard to give your printer a more descriptive name. Do NOT enter a dash in your printer's name without placing a character space before and after the dash. Windows will interpret a dash without spaces as a command and malfunction.
11. Select either Yes or No to make this printer your default windows printer. Choose **Yes** if you will be printing primarily to this printer from your windows applications. Click **Next**.
12. When the Printer Sharing window displays, select **Not Shared** (NT4.0) or **Do not share this printer** (2000), unless the printer is directly connected to your workstation and you wish to share it with other network users. Click **Next**.
13. If the printer is powered on and capable of communicating with your workstation, when prompted to print a test page select **Yes**.
14. Click **Finish**.
15. If the message "Digital Signature is Not Found" displays, and you are prompted as to whether you wish to continue the installation, click **Yes**.
16. Verify that an icon representing your printer is now displayed in your desktop "Printers" window.

Note: Upon installation, this driver will look for Windows System registry entries created by the AutoCAD 2000i program installer. If such entries are found, this driver will add itself to the list of available printers (plotters) within the AutoCAD program.

Driver/Port Installation (95/98)

1. Start Windows 95/98 on your workstation.
2. Insert the CD ROM containing this driver, in your language, into your workstation's drive and unzip your driver file (typically accomplished by double clicking on the self-extracting file).
Note: If you downloaded the driver files from the Internet, you can skip this step.
3. On your workstation's desktop, click "Start," "Settings," and "Printers" to open the "Printers" window.
4. From the "Printers" window, double click on the **Add Printer** icon.
5. When the "Add Printer Wizard" displays, click **Next**.
6. Click on the **Local printer** radio button, unless you will be printing through a network server in which case you should select Network printer.
Note: If you select Network Printer, you will have to click Browse to open up the applicable network directories and sub-directories to locate your printer's server.
7. When the "Manufacturers and Printers" windows display, click **Have Disk...** and enter the path to the driver files on your workstation (for example, the drive letter for your CD ROM drive or C:\temp\ for downloaded internet files). Click **OK**.
8. When the "Printers" window displays, select XES Synergix 8825/8830/8850/8855 and click **Next**.
Note: If an older HP-GL/2/HP RTL driver was installed on your workstation, a screen will be displayed asking you if you wish to "Keep existing driver," or "Replace existing driver." Choose "Replace existing driver," unless you have a reason to keep an older version of the driver on your system.

9. When the "Available Ports" window displays, depending upon your situation, do the following:
 - If you selected "Network Printer" in step 6 above, you do NOT have to perform this port selection step. Click **Next**.
 - If you already have an XES Net Port installed, select the port from the displayed list and click **Next**.
 - If you do NOT already have an XES Net Port installed, click **Add Port...** to display the Net Port dialog. Enter the IP Address of your printer in the entry box and click **OK**. When the Transmission Retry dialog displays, accept the default value of 30 seconds and click **OK**. Click **Next**.
10. When prompted, accept the default printer name shown, or use your keyboard to give your printer a more descriptive name.
11. Select either Yes or No to make this printer your default windows printer. Choose **Yes** if you will be printing primarily to this printer from your windows applications. Click **Next**.
12. If the printer is powered on and capable of communicating with your workstation, select **Yes** when prompted to print a test page.
13. Click **Finish**.
14. Verify that an icon representing your printer is now displayed in your desktop "Printers" window.

Note: Upon installation, this driver will look for Windows System registry entries created by the AutoCAD 2000i program installer. If such entries are found, this driver will add itself to the list of available printers (plotters) within the AutoCAD program.

Driver Configuration

Accessing the Printer Properties Dialog

From your Desktop, click “Start,” “Settings,” and “Printers” to open the Printers Window revealing a representative icon for your XES Synergix 8825/8830/8850/8855 HP-GL/2 & HP RTL printer driver.

From this window, if you right mouse click on the printer icon, then left mouse click on Properties, you will open the Printer Properties dialog (set of tabbed screens).

Appearance and Purpose of the Windows 95/98 Printer Properties Dialog

The Printer Properties dialog (Figure 2) contains numerous printer parameters that can be chosen as the default driver settings for ALL print jobs by left mouse clicking on the appropriate tab and making the available selections.

After making your selections on each Tab, click **Apply** to apply your new settings to the driver. Click **Restore Defaults** to restore factory default settings. Click **OK** to save all settings and close the currently-displayed driver dialog. Click **Cancel** to escape from the currently-displayed dialog WITHOUT saving changed settings.

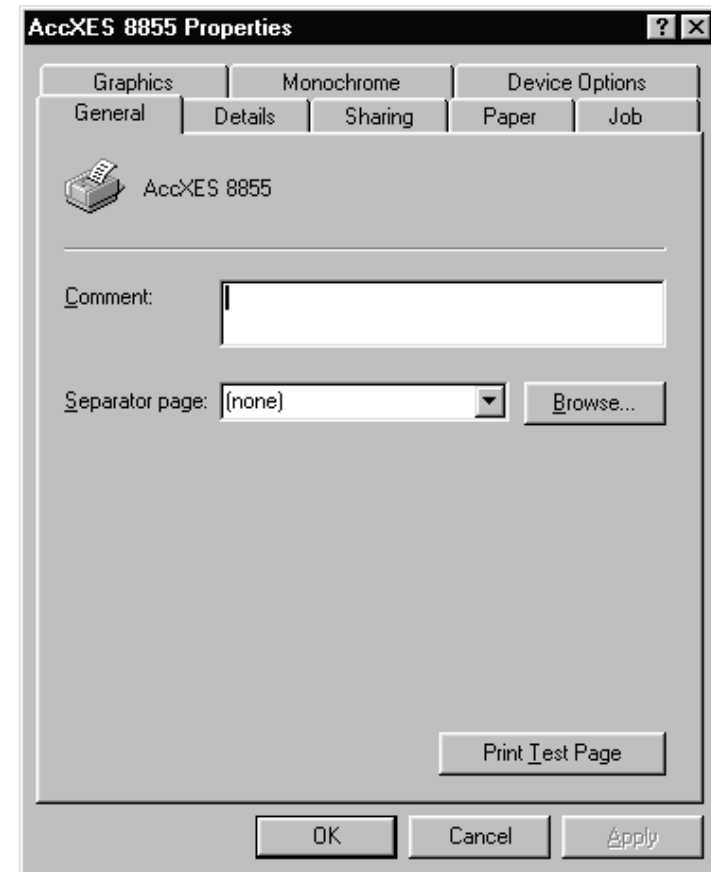


Figure 2. Typical Windows 95/98 Printer Properties Dialog

Tabs of the Windows 95/98 Printer Properties Dialog

General Tab

The General Tab enables you to print a test page by clicking the **Print Test Page** button. This feature is useful in verifying the ability of your workstation to successfully communicate with the printer's Controller.

The Separator Page feature is not supported.

Tabs of the Windows 95/98 Printer Properties Dialog (continued)

Details Tab

The Details Tab allows you to select the currently active port for the displayed printer, or to add, delete, or capture ports as required. You **MUST** have an active port created and selected for use with the printer or you will not be able to print. As the XES Net Port (i.e. XES TCP/IP Port) is usually installed at the time that you install the driver, this port would typically be displayed in the "Print to the following port" box.

The current driver (e.g., XES Synergix 8825) is displayed in the "Print using the following driver" box. Do **NOT** change this setting. If you change this setting, your print jobs will be using the wrong driver to print to the printer. As a result, your job may not print correctly.

The **Spool Settings...** button allows you to change the settings for the Windows spooler, which directs print jobs to your workstation's memory, freeing your software application from its printing task so that you can continue working. Printing communications then occur in the background between the Spooler and the printer's Controller.

Note: Unless you are a qualified Systems Administrator, it is recommended that you leave the Spool Settings at their factory default values.

The **Port Settings...** button enables you to change settings for the displayed port.

Note: Unless you are a qualified Systems Administrator, it is recommended that you leave the Port Settings at their factory default values.

***Tabs of the Windows 95/98 Printer Properties Dialog
(continued)***

Sharing Tab

The Sharing Tab allows you to share your workstation-connected printer with others in a peer-to-peer network environment.

If applicable to your printer installation, a qualified Systems Administrator can supply you with the appropriate settings for this Tab.

Tabs of the Windows 95/98 Printer Properties Dialog (continued)

Paper Tab

This Tab allows you to set a number of parameters to determine how your document will appear on the printed media. Options include:

Application media size - Select a media size as the default media size for the driver to display when printing your jobs. Accept the default value or choose a size that matches your application's typical page layout. Use the drop-down arrow to the right of the selection box to reveal the full list of choices. The default media size is **Letter (8.5x11")**.

Media Sizes... button - Click this button to open the Media Sizes dialog enabling you to modify the sizes displayed in the "Application media size:" drop-down list.

Media Sizes dialog

- You can use the **Custom media size** settings of this dialog to set up a custom page size to display in the "Application media size:" drop-down list.
- Use the **Media mapping** drop-down list to specify how the custom media size will be mapped to the media rolls installed in the printer. If you select Any, Any ANSI, Any ARCH, or Any ISO, the Controller will select the smallest media size *in the specified media family* to print your job on. Automatic rotation of the job will be performed as needed. If you select Any Roll (the factory default setting), the Controller will select the smallest media roll that the job fits on. Automatic rotation of the job will be performed as needed.
- Use the **Available media sizes** check boxes to determine the media families to display in the "Application media size:" drop-down list. By default all boxes are checked (display set to on).
- Use the **User Defined Media...** button to provide new media names, with accompanying sizes and media mapping, to the "Application media size:" drop-down list.

Media type: – Use the drop-down arrow to select your default media type from the displayed list. The factory default setting is **Bond**.

Media source: - This parameter displays the default media source. Use the drop-down arrow to select your default media source from the displayed list. The factory default setting is **Automatically Select**.

Orientation - Click on the appropriate radio button to select a default, printed document orientation. The factory default setting is **Portrait**.

Copy Count – Enter a number from 1 to 999 as your default number of document copies to print. The factory default setting is **1**.

Margin & Justification... button – This button opens the dialog used to set the margins and justification that the Controller uses to place your printed job on the media. The margins set here are used as the device margins by your software application. Margins can be set to zero to make the whole application media size the printable area, or left at their default of 0.20", which are the printer's recommended tolerances.

Tabs of the Windows 95/98 Printer Properties Dialog (continued)

Job Tab

BANNER PAGE

This option allows you to determine whether a banner page is printed before or after your job. You can also select Printer Defaults to let banner page printing be determined by the parameters stored in the printer's Controller, as set up using the Web Printer Manager Tool. The default driver setting is **None**, meaning that no banner page is specified.

LABELING

This option allows you to determine if a plot label will be applied to your print job. You can select either **Printer default** or **User defined**.

Printer Default uses the default label stored in the Controller, if a default label was previously set up using the Web Printer Manager Tool.

If you select **User defined**, the **Settings...** button will be enabled. When you click this button, a Label dialog will display allowing you to create a label of 1048 characters in length. Using this dialog, label placement position, font type, font size, and text shading attributes can be individually set. Text shading has a range of 0% (white text) to 100% (solid black text).

The factory default setting for the Labeling option is **None** meaning that no label is specified by the driver.

Continued on next page.

Job Tab, Windows 95/98 Printer Properties (continued)

RASTER STAMP

This option allows you to determine if a raster stamp will be applied to your print job. You can select either **Printer default** or **User defined**.

Printer Default uses the default raster stamp stored in the Controller, if a default stamp was previously set up using the Web Printer Manager Tool.

If you select **User defined**, the **Settings...** button will be enabled. When you click this button, a Raster Stamp dialog will display allowing you to select a known, Controller-resident stamp from the "Raster stamp name" drop-down list. If a list of Controller-resident stamps is not displayed, you can enter a known stamp name of up to 32 alphanumeric characters in the "Raster stamp name" text box.

Using this dialog, raster stamp placement position, stamp rotation, and scaling attributes can be individually set. Scaling has a range of 10% to 999% in your choice of two options. Select the **Relative to drawing** radio button if you wish to have your stamp scaled in size to the plot image that it is being applied to. Select **Absolute** if you wish to have the scaling factor literally applied to the stamp file itself.

The factory default setting for the Raster Stamp option is **None** meaning that no stamp is specified by the driver.

FINISHING

Note: If you do not have a finishing device (folder) installed, "Folder bypass" will be displayed in gray and any other options will be unavailable for selection.

If you have an attached finishing device, and bi-directional communications are enabled in the driver (using the **Spool Settings...** button on the Details Tab), the finishing device will be automatically detected. When a finishing device has been detected by the driver, the drop-down list will enable you to select either **Printer default** or **User defined**.

Printer Default uses the default finisher settings stored in the Controller, previously set up using the Web Printer Manager Tool.

If you select **User defined**, the **Settings...** button will be enabled. When you click this button, a Finishing Options dialog will display allowing you to select the finishing program to use with your Finishing Device. For an explanation of the individual dialog features, click the "?" key in the upper right corner of the dialog.

Continued on next page.

Job Tab, Windows 95/98 Printer Properties (continued)

PLOT NESTING

This option allows you to determine if plot nesting will be applied to your print job. The purpose of Plot Nesting is to efficiently group the printing of plots on a single sheet of media to eliminate media waste. You can select either

Printer default or **Single job**.

Printer Default uses the default plot nesting settings stored in the Controller, previously set up using the Web Printer Manager Tool. These pre-determined settings include: Exclusive nesting (i.e. reserved to a Single Job), Timeout, Margins (between nested plots), and maximum Nesting Length.

Single Job creates a plot nest restricted to the contents of your current job. Plots from other job sources will not be intermixed with plots from your job. If you select **User defined**, the **Settings... button** will be enabled. When you click this button, a Plot Nesting Options dialog will display allowing you to adjust the margins between printed images on your nested page.

MEDIA MISMATCH

Working with the Media Mismatch Mode parameters set up by your System Administrator using the Web Printer Manager Tool, you can select one of four available options to determine how you would like to handle mismatches between your job's media type, or size, and media types, or sizes, installed in the printer.

Printer Default uses the default plot nesting settings stored in the Controller, previously set up using the Web Printer Manager Tool (PMT). This is the default driver setting.

Scale To Fit will scale the size of your job to the nearest, printer-installed medium to your requested print size.

Block Printing will cause the printer to hold a media mismatched job until the proper medium has been installed in the printer. Depending upon how the System Administrator has set up the Mismatch parameters using the Web PMT, the mismatched job will either halt printing, or send the job to a mismatch queue for later recall and media size or type resolution.

Substitute Media will substitute a medium size or type on which to print the requested, mismatched job in either a 1 to 1 ratio or scaled to fit currently installed media. This is a "print at all costs" option.

Continued on next page.

Job Tab, Windows 95/98 Printer Properties (continued)

JOB PRIORITY

This option lets you select a job processing priority. The range is from 1 to 10, with 1 representing a low priority job and 10 representing a high priority job. Higher priority jobs generally print faster in a print queue than lower priority jobs. Click on the up or down arrows to set your priority.

Tabs of the Windows 95/98 Printer Properties Dialog (continued)

Graphics Tab

This Tab allows you to modify the driver settings for Scaling, Mirroring, and Rotation.

Scaling - Click on the radio button of your choice to select one of three available scaling options.

- **Printer default** - This selection uses the default scaling parameter stored in the Controller, previously set up using the Web Printer Manager Tool. This is the default driver setting.
- **To fit** - This selection automatically scales your image to fit the media size that you choose from the drop-down list to the right of the "To fit" radio button.
- **Fixed** - This selection scales your image by the percentage that you specify using the up or down arrows to the right of the "Fixed" radio button. Fixed scaling has a range of 10% to 999% in 1% increments.

Raster image scaling - Click on the radio button of your choice to select one of two available options to be used when raster images are scaled down.

- **Line** - This selection tells the Controller to use a pixel-preserving algorithm to preserve fine lines for image size reductions.
- **Photo** - This selection tells the Controller to use a simple pixel-depleting algorithm for image size reductions. This is the default driver setting.

Mirroring - Click on the check box of your choice to place a check mark in the box for the type of mirror image printing that you desire.

- **Mirror X** - This selection will mirror print your image along the horizontal access.
- **Mirror Y** - This selection will mirror print your image along the vertical axis.

Rotation - Click on the arrow to the right of the selection box to reveal a drop-down list of printed image rotation options.

- **Auto** - This selection lets the Controller determine printed image rotation for the most economical placement of document pages on available media. This is the default driver setting.
- **0, 90, 180, 270** - Any one of these selections produces printed image rotation to the degree specified.

Enable RTL native mode resolution - This box is checked (enabled by factory default) to have the Controller optimize resolution for your printed job. If you remove the check mark from this box, your image will be placed on the media using a 300 dpi coordinate system.

***Tabs of the Windows 95/98 Printer Properties Dialog
(continued)***

Monochrome Tab

Resolution - This selection box displays the driver's current resolution setting for jobs being sent to the printer. The factory default setting is **400 dpi**. You can click on the arrow to the right of the selection box to reveal a drop-down list including 200 dpi, 300 dpi, and 400 dpi. If you select a lower resolution than the factory default, the size of your print file will be smaller and the speed of printing will be faster. The quality of printing will be lower, however, with less image sharpness and detail.

Make all color black - If this option is enabled (with a check mark in the box), the driver will force all colors in your job to be printed in black, instead of being represented by grayscales. If this is desirable, use your mouse to place a check mark in the box. This option is disabled by factory default.

Tabs of the Windows 95/98 Printer Properties Dialog (continued)

Device Options Tab

Display Units - Select one of the two available radio buttons to set "display units" in inches or millimeters for all applicable, driver-displayed options. The driver default setting is **English (inch)**.

Refresh printer configuration - With bi-directional communications enabled from the Spool Settings... button of the Details Tab, this checkbox and Refresh button enable the retrieval of driver feature information obtained from the Controller.

- **Refresh on open checkbox** - If this option is enabled (with a check mark in the box), the driver will retrieve information from the Controller every time the Printer Properties dialog is opened from your desktop. The box is checked (enabled) by factory default. If you wish to disable this feature, use your mouse to remove the check mark from the box.
- **Refresh button** - You can refresh the driver with Controller information at any time by clicking this button.

Printer Accounting checkbox and Settings button

Note: This feature is meant to work with the Job Accounting parameters set up by your System Administrator.

DEPENDING UPON THE CONTROLLER FIRMWARE VERSION detected by refreshing this driver as described above, the printer accounting feature will require EITHER the entry of numbers, OR the entry of alphanumeric characters.

- **If Accounting is enabled at the Controller**, as shown on the Account Modes Page of the Web Printer Manager Tool, the checkbox will be enabled (checked) by default and the **Settings... button** will be available for selection. Click on the Settings... button to enter in an account number of 1 to 999999 and a sub-account number of 1 to 9999 (Firmware 6.1 or older), or a User ID and Account ID of 1 to 32 alphanumeric characters (Firmware 7.0 or newer) to charge media use

to. These must be the same numbers (or User and Account identifications) that were assigned to you by your System Administrator. Failure to enter in a valid number (ID) will result in the printing of an error page.

- **If Accounting is Optionally enabled at the Controller**, as shown on the Account Modes Page of the Web Printer Manager Tool, the checkbox will be enabled (checked) by default and the **Settings... button** will be available for selection. You may choose whether or not to participate in accounting. If you choose to participate, click on the Settings... button and enter in your account number of 1 to 999999 and sub-account number of 1 to 9999 (Firmware 6.1 or older), or a User ID and Account ID of 1 to 32 alphanumeric characters (Firmware 7.0 or newer), to charge media use to. These must be the same numbers (or User and Account identifications) that were assigned to you by your System Administrator. If you choose not to participate, there is no penalty for non-participation. Your job will print normally.
- **If Accounting is disabled at the Controller**, as shown on the Account Modes Page of the Web Printer Manager Tool, the checkbox and Settings... button will be disabled and unavailable for selection.

**Device Options Tab, Windows 95/98 Printer Properties
(continued)**

Firmware revision - This selection box shows you the version of Controller firmware that is supplying the driver with feature information to display.

With bi-directional communication enabled from the Spool Settings... button of the Details Tab, the drop-down arrow will be unavailable for selection.

With bi-directional communication disabled, you will have to use the drop-down arrow to select the firmware version matching the version that is installed in your Controller to display the correct driver features.

Finisher type - With bi-directional communication enabled from the Spool Settings... button of the Details Tab, this selection box shows you the finisher device currently attached to your printer. With bi-directional communication disabled, you can select **<add finisher>** to add a new finisher to the drop-down list using a Finisher Description File (.fin).

Notes:

*When you add a new finisher to this list, then select the finisher name, and click **OK** on the Device Options dialog, the Finishing drop-down list of the Job Tab will be enabled, allowing you to configure settings for your "User defined" Finishing device.*

If you add a Finisher Description File for a finisher already in the drop-down list, the new information will overwrite the current finisher information.

Roll Configuration... button - With bi-directional communication enabled from the Spool Settings... button of the Details Tab, when you click this button you will see a display of printer-installed media and the status of each medium (none, full, empty, low). With bi-directional communication disabled, you will have to use the drop-down arrows to select your printer-installed media for the driver to correctly report installed media under the Media Source list of the Paper Tab. Without bi-directional communication support, the status of each medium will be displayed as "unknown."

Appearance and Purpose of the NT4.0 Printer Properties Dialog

The Tabs of the NT4.0 Printer Properties dialog appear as shown in Figure 3. The purpose of the Printer Properties Dialog in NT4.0 is to display, and enable the configuration of, general Windows functions for the driver.

To modify the default driver settings for ALL print jobs in NT4.0, from the Printers Window, right mouse click on your printer's icon, then select "Document Defaults."

Continued on next page.

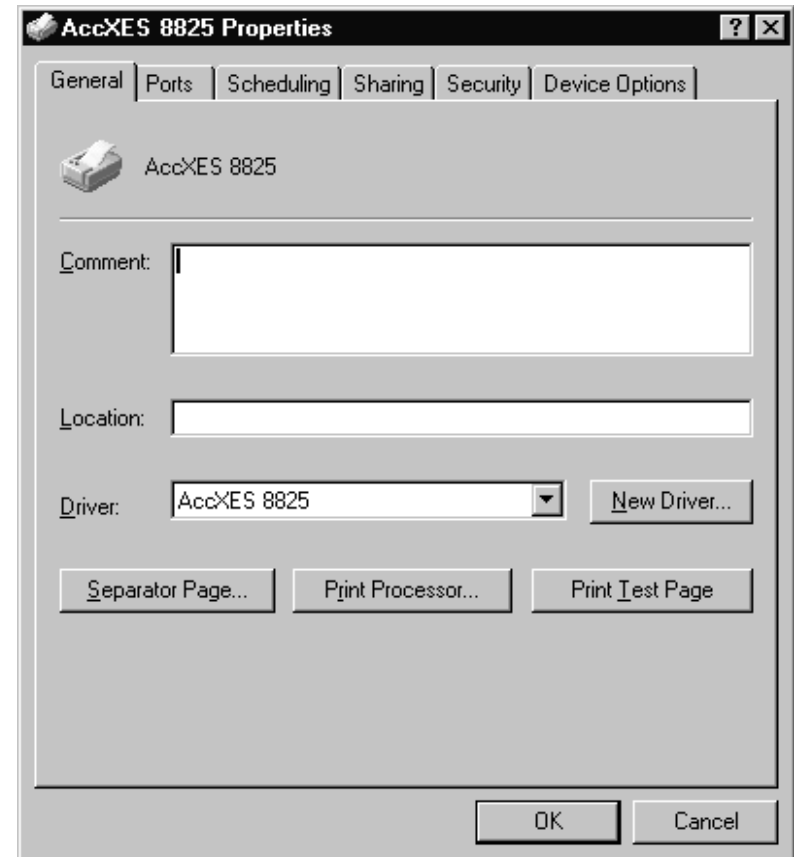


Figure 3. Typical Windows NT 4.0 Printer Properties Dialog

Driver Configuration (Printer Properties Dialog)

Tabs of the NT4.0 Printer Properties Dialog

General Tab

The General Tab enables you to print a test page by clicking the **Print Test Page button**. This feature is useful in verifying the ability of your workstation to successfully communicate with the printer's Controller.

The current driver is displayed in the "Driver" box. Do NOT change this setting. If you change this setting, your print jobs will be using the wrong driver to print to your printer. As a result, your job may not print correctly.

If you click on **Print Processor...** you can change the default Windows output data type, used only if your application does not specify a data type. If the data type is RAW, the Windows print processor does not modify your document. Leave this setting at the factory default of RAW.

Click on **Separator Page** to have a separator page printed to make it easier to locate your document among others at the printer. Note that you will have to click **Browse** to find a suitable **.sep** file.

Tabs of the NT4.0 Printer Properties Dialog (continued)

Ports Tab

The Ports Tab allows you to select the currently active port for the displayed printer, or allows you to add, delete, or configure ports as required. You **MUST** have an active port created and selected for use with the XES Synergix 8825/8830/8850/8855 printer or you will not be able to print. If you do not have an XES Net Port (XES TCP/IP Port) installed, you can install one using the procedure stated in "Creating a Printer Port (NT4.0/2000)" in this User Guide. Make sure that an appropriate port is selected (with a check mark in the box) for use with your printer.

*Note: If you have previously installed an XES TCP/IP Port, you can click the **Add Port... button** at any time to create a new printer port. Make sure to select XES Net Port from the list of available port types, then click the **New Port... button**. Enter the IP Address of your printer's Controller when prompted. Accept the default Timeout value on the displayed "Configuration" dialog. To delete a port see the instructions at the end of this User Guide entitled "Removing the Net Port Monitor."*

Through this tab you can also check or uncheck "**Enable bi-directional support**" to allow you to have bi-directional communication between your computer and your printer. By default, the "Enable bi-directional support" box is checked.

Note: A check mark in the "Enable bi-directional support" box allows bi-directional communication to take place between your workstation (this driver) and the controller for display of features matching the version of firmware running in your Controller.

You can also check or uncheck "**Enable printer pooling**" which allows you to print to the first available printer in a "pool" of identical printers. To set up a printer pool, check "Enable printer pooling" and then select the check boxes for all the printer ports that you want to include in the "pool."

Tabs of the NT4.0 Printer Properties Dialog (continued)

Scheduling Tab

You can use the Scheduling tab to specify times when the printer is available by selecting either “Always available” or “Available from” and choosing a range of times the printer is available.

You can also select the “**Priority**” of printing, ranging from 1 (lowest) to 99 (highest). Higher priority documents will print before lower priority documents in the print queue.

The Scheduling tab also allows you to select a variety of spooling options, so that you can control the spooling of print jobs to your workstation's memory, quickly freeing your software application from its printing task. Unless you are having windows spooler problems, it is best if these settings are left at their factory default values.

Tabs of the NT4.0 Printer Properties Dialog (continued)

Sharing Tab

The Sharing Tab allows you to share a printer that you have ownership of with others in a network environment.

If applicable to your printer installation, a qualified Systems Administrator can supply you with the appropriate settings for this Tab.

Tabs of the NT4.0 Printer Properties Dialog (continued)

Security Tab

This Tab is used to set up printer administrator permissions, printer auditing information, and printer ownership for a shared printer in a network environment. These are tasks that should be performed by a qualified Systems Administrator.

Tabs of the NT4.0 Printer Properties Dialog (continued)

Device Options Tab

Display Units - Select one of the two available radio buttons to set "display units" in inches or millimeters for all applicable, driver-displayed options. The driver default setting is **English (inch)**.

Refresh printer configuration - With bi-directional communications enabled from the checkbox on the Ports Tab, this checkbox and Refresh button enable the retrieval of driver feature information obtained from the Controller.

- **Refresh on open checkbox** - If this option is enabled (with a check mark in the box), the driver will retrieve information from the Controller every time the Printer Properties dialog is opened from your desktop. If you wish to disable this feature, use your mouse to remove the check mark from the box.
- **Refresh button** - You can refresh the driver with Controller information at any time by clicking this button.

Printer Accounting checkbox and Settings button

Note: This feature is meant to work with the Job Accounting parameters set up by your System Administrator.

DEPENDING UPON THE CONTROLLER FIRMWARE VERSION detected by refreshing this driver as described above, the printer accounting feature will require EITHER the entry of numbers, OR the entry of alphanumeric characters.

- If Accounting is enabled at the Controller, as shown on the Account Modes Page of the Web Printer Manager Tool, the checkbox will be enabled (checked) by default and the **Settings... button** will be available for selection. Click on the Settings... button to enter in an account number of 1 to 999999 and a sub-account number of 1 to 9999 (Firmware 6.1 or older), or a User ID and Account ID of 1 to 32 alphanumeric characters (Firmware 7.0 or newer) to charge media use to. These must be the same numbers (or User and Account identifications) that were assigned to you by your System Administrator. Failure to enter in a valid number (ID) will result in the printing of an error page.

- If Accounting is Optionally enabled at the Controller, as shown on the Account Modes Page of the Web Printer Manager Tool, the checkbox will be enabled (checked) by default and the **Settings... button** will be available for selection. You may choose whether or not to participate in accounting. If you choose to participate, click on the Settings... button and enter in your account number of 1 to 999999 and sub-account number of 1 to 9999 (Firmware 6.1 or older), or a User ID and Account ID of 1 to 32 alphanumeric characters (Firmware 7.0 or newer), to charge media use to. These must be the same numbers (or User and Account identifications) that were assigned to you by your System Administrator. If you choose not to participate, there is no penalty for non-participation. Your job will print normally.
- If Accounting is disabled at the Controller, as shown on the Account Modes Page of the Web Printer Manager Tool, the checkbox and Settings... button will be disabled and unavailable for selection.

Continued on next page.

Device Options Tab, NT4.0 Printer Properties (continued)

Firmware revision - This selection box shows you the version of Controller firmware that is supplying the driver with feature information to display.

With bi-directional communication enabled from the checkbox on the Ports Tab, the drop-down arrow will be unavailable for selection.

With bi-directional communication disabled, you will have to use the drop-down arrow to select the firmware version matching the version that is installed in your Controller to display the correct driver features.

Finisher type - With bi-directional communication enabled from the checkbox on the Ports Tab, this selection box shows you the finisher device currently attached to your printer. With bi-directional communication disabled, you can select **<add finisher>** to add a new finisher to the drop-down list using a Finisher Description File (.fin).

Notes:

*When you add a new finisher to this list, then select the finisher name, and click **OK** on the Device Options dialog, the Finishing drop-down list of the Job Tab (described later in this User Guide) will be enabled, allowing you to configure settings for your "User defined" Finishing device.*

If you add a Finisher Description File for a finisher already in the drop-down list, the new information will overwrite the current finisher information.

Roll Configuration... button - With bi-directional communication enabled from the checkbox on the Ports Tab, when you click this button you will see a display of printer-installed media and the status of each medium (none, full, empty, low). With bi-directional communication disabled, you will have to use the drop-down arrows to select your printer-installed media for the driver to correctly report installed media. Without bi-directional communication support, the status of each medium will be displayed as "unknown."

Appearance and Purpose of the Windows 2000 Printer Properties Dialog

The Tabs of the Windows 2000 Printer Properties dialog appear as shown in Figure 4. The purpose of the Printer Properties Dialog in Windows 2000 is to display, and enable the configuration of, general Windows functions for the driver AND to enable you to modify the default driver settings for ALL print jobs by clicking the available **Printing Preferences...** button on the General Tab or the **Printing Defaults...** button on the Advanced Tab.



Figure 4. Typical Windows 2000 Printer Properties Dialog

Driver Configuration (Printer Properties Dialog)

Tabs of the Windows 2000 Printer Properties Dialog

General Tab

The General Tab enables you to print a test page by clicking the **Print Test Page** button. This feature is useful in verifying the ability of your workstation to successfully communicate with the printer's Controller.

You can also click **Printing Preferences** to open the Paper, Job, Graphics, and Monochrome Tabs, described later in this User Guide, enabling you to modify the default driver settings for ALL print jobs.

Tabs of the 2000 Printer Properties Dialog (continued)

Sharing Tab

The Sharing Tab allows you to share a printer that you have ownership of with others in a network environment.

If applicable to your printer installation, a qualified Systems Administrator can supply you with the appropriate settings for this Tab.

Tabs of the 2000 Printer Properties Dialog (continued)

Ports Tab

The Ports Tab allows you to select the currently active port for the displayed printer, or allows you to add, delete, or configure ports as required. You MUST have an active port created and selected for use with the XES Synergix 8825/8830/8850/8855 printer or you will not be able to print. If you do not have an XES Net Port (XES TCP/IP Port) installed, you can install one using the procedure stated in "Creating a Printer Port (NT4.0/2000)" in this User Guide. Make sure that an appropriate port is selected (with a check mark in the box) for use with your printer.

*Note: If you have previously installed an XES TCP/IP Port, you can click the **Add Port... button** at any time to create a new printer port. Make sure to select XES Net Port from the list of available port types, then click the **New Port... button**. Enter the IP Address of your printer's Controller when prompted. Accept the default Timeout value on the displayed "Configuration" dialog. To delete a port see the instructions at the end of this User Guide entitled "Removing the Net Port Monitor."*

Through this tab you can also check or uncheck "**Enable bi-directional support**" to allow you to have bi-directional communication between your computer and your printer. By default, the "Enable bi-directional support" box is checked.

Note: A check mark in the "Enable bi-directional support" box allows bi-directional communication to take place between your workstation (this driver) and the controller for display of features matching the version of firmware running in your Controller.

You can also check or uncheck "**Enable printer pooling**" which allows you to print to the first available printer in a "pool" of identical printers. To set up a printer pool, check "Enable printer pooling" and then select the check boxes for all the printer ports that you want to include in the "pool."

Tabs of the 2000 Printer Properties Dialog (continued)

Advanced Tab

You can use the Advanced tab to specify times when the printer is available by selecting either "Always available" or "Available from" and choosing a range of times the printer is available. You can also select the "**Priority**" of printing, ranging from 1 (lowest) to 99 (highest). Higher priority documents will print before lower priority documents.

The current driver (XES Synergix 8855, for example) is displayed in the "Driver:" box. Do NOT change this setting. If you change this setting, your print jobs will be using the wrong driver to print to your printer. As a result, your job may not print correctly.

The Advanced tab also allows you to select a variety of spooling options, so that you can control spooling and the speed of printing. In general, it is best if the spooling settings are left at their factory defaults.

You can click **Printing Defaults** to open the Paper, Job, Graphics, and Monochrome Tabs, described later in this User Guide. Accessing these Tabs and changing their parameters from the Printer Properties Dialog configures the default driver settings for ALL print jobs.

If you click on **Print Processor...** you can change the default Windows output data type, used only if your application does not specify a data type. If the data type is RAW, the Windows print processor does not modify your document. Leave this setting at the factory default of RAW.

Click on **Separator Page** if you want an extra separator page to be printed with your document. Note that you will have to click **Browse** to locate a suitable **.sep** file.

Tabs of the 2000 Printer Properties Dialog (continued)

Color Management Tab

This is a Microsoft Windows Tab that is not currently applicable to this driver.

Tabs of the 2000 Printer Properties Dialog (continued)

Security Tab

This Tab is used to set up printer administrator permissions, printer auditing information, and printer ownership for a shared printer in a network environment. These are tasks that should be performed by a qualified Systems Administrator.

Tabs of the 2000 Printer Properties Dialog (continued)

Device Options Tab

Display Units - Select one of the two available radio buttons to set "display units" in inches or millimeters for all applicable, driver-displayed options. The driver default setting is **English (inch)**.

Refresh printer configuration - With bi-directional communications enabled from the checkbox on the Ports Tab, this checkbox and Refresh button enable the retrieval of driver feature information obtained from the Controller.

- **Refresh on open checkbox** - If this option is enabled (with a check mark in the box), the driver will retrieve information from the Controller every time the Printer Properties dialog is opened from your desktop. If you wish to disable this feature, use your mouse to remove the check mark from the box.
- **Refresh button** - You can refresh the driver with Controller information at any time by clicking this button.

Printer Accounting checkbox and Settings button

Note: This feature is meant to work with the Job Accounting parameters set up by your System Administrator.

DEPENDING UPON THE CONTROLLER FIRMWARE VERSION detected by refreshing this driver as described above, the printer accounting feature will require EITHER the entry of numbers, OR the entry of alphanumeric characters.

- If Accounting is enabled at the Controller, as shown on the Account Modes Page of the Web Printer Manager Tool, the checkbox will be enabled (checked) by default and the **Settings... button** will be available for selection. Click on the Settings... button to enter in an account number of 1 to 999999 and a sub-account number of 1 to 9999 (Firmware 6.1 or older), or a User ID and Account ID of 1 to 32 alphanumeric characters (Firmware 7.0 or newer) to charge media use to. These must be the same numbers (or User and Account identifications) that were assigned to you by your System Administrator.

Failure to enter in a valid number (ID) will result in the printing of an error page.

- If Accounting is Optionally enabled at the Controller, as shown on the Account Modes Page of the Web Printer Manager Tool, the checkbox will be enabled (checked) by default and the **Settings... button** will be available for selection. You may choose whether or not to participate in accounting. If you choose to participate, click on the Settings... button and enter in your account number of 1 to 999999 and sub-account number of 1 to 9999 (Firmware 6.1 or older), or a User ID and Account ID of 1 to 32 alphanumeric characters (Firmware 7.0 or newer), to charge media use to. These must be the same numbers (or User and Account identifications) that were assigned to you by your System Administrator. If you choose not to participate, there is no penalty for non-participation. Your job will print normally.
- If Accounting is disabled at the Controller, as shown on the Account Modes Page of the Web Printer Manager Tool, the checkbox and Settings... button will be disabled and unavailable for selection.

Continued on next page.

Device Options Tab, 2000 Printer Properties (continued)

Firmware revision - This selection box shows you the version of Controller firmware that is supplying the driver with feature information to display.

With bi-directional communication enabled from the checkbox on the Ports Tab, the drop-down arrow will be unavailable for selection.

With bi-directional communication disabled, you will have to use the drop-down arrow to select the firmware version matching the version that is installed in your Controller to display the correct driver features.

Finisher type - With bi-directional communication enabled from the checkbox on the Ports Tab, this selection box shows you the finisher device currently attached to your printer. With bi-directional communication disabled, you can select **<add finisher>** to add a new finisher to the drop-down list using a Finisher Description File (.fin).

Notes:

*When you add a new finisher to this list, then select the finisher name, and click **OK** on the Device Options dialog, the Finishing drop-down list of the Job Tab (described later in this User Guide) will be enabled, allowing you to configure settings for your "User defined" Finishing device.*

If you add a Finisher Description File for a finisher already in the drop-down list, the new information will overwrite the current finisher information.

Roll Configuration... button - With bi-directional communication enabled from the checkbox on the Ports Tab, when you click this button you will see a display of printer-installed media and the status of each medium (none, full, empty, low). With bi-directional communication disabled, you will have to use the drop-down arrows to select your printer-installed media for the driver to correctly report installed media. Without bi-directional communication support, the status of each medium will be displayed as "unknown."

Driver Configuration (continued)

From the Print Command of your Application

Accessing the Document Properties Dialog

IN WINDOWS 95/98/NT 4.0

Select "File," "Print," within a desktop application (such as Microsoft Word, or PageMaker, for example) to display the Print Screen which typically lets you select your printer, number of copies to be printed, and range of pages to be printed. From your application's Print Screen, click the appropriate button (**Properties** in Microsoft Word or **Setup** in CorelDRAW 5.0, for example) to display the Document Properties dialog.

IN WINDOWS 2000

Select "File," "Print," within a desktop application (such as Microsoft Word, or PageMaker, for example) to display the Print screen which lets you select your print driver and set numerous print processing parameters for the current job only.

Select the Layout Tab to change the orientation of the document to Portrait or Landscape. Select the Paper/Quality Tab to change the Paper Source and Media type. From either of these tabs, click **Advanced** to display the Document Properties dialog.

IN AUTOCAD 2000I

Select "File," and "Plot" (or Page Setup) to display the Plot Screen. Select this driver from the drop-down list of plotters. Wait a moment for the driver's Document Properties Dialog to load. Click the **Properties...** button, select the Device and Document Settings Tab, choose "Custom Properties," and click the **Custom Properties...** button. The 4 tabbed, Document Properties dialog will now be displayed (see Figure 5).

Driver Configuration (Document Properties Dialog)

Appearance and Purpose of the Document Properties Dialog

As shown in Figure 5, the Document Properties dialog contains numerous print processing parameters that can be set for the current print job only by left mouse clicking on the appropriate tab and making the available selections.

After making your selections on each Tab, click **Apply** to apply your new settings to the driver. Click **Restore Defaults** to restore factory default settings. Click **OK** to save all settings and close the currently-displayed driver dialog. Click **Cancel** to escape from the currently-displayed dialog WITHOUT saving changed settings.

SAVING A PC3 FILE IN AUTOCAD 2000i

Within the AutoCAD 2000i program, it is possible to save a PC3 file of all the settings of the Document Properties Dialog. Whenever such settings are again required for printing, this file can be selected from the drop-down list of printers (plotters) on AutoCAD's Plot Screen.

To save a PC3 file, select this driver within the AutoCAD 2000i program, then access the Document Properties Dialog as stated in this Guide. Make changes to all applicable settings, click **OK** to accept the "Custom Properties," and click **OK** again to accept the Plotter Configuration Editor menu in AutoCAD. Select "save changes to the following file" when prompted, give the file a recognizable name, and click **OK**.



Figure 5. Typical Document Properties Dialog

Tabs of the Document Properties Dialog

Paper Tab

This Tab allows you to set a number of parameters to determine how your document will appear on the printed media. Options include:

Application media size - Select a media size as the default media size for the driver to display when printing your jobs. Accept the default value or choose a size that matches your application's typical page layout. Use the drop-down arrow to the right of the selection box to reveal the full list of choices. The default media size is **Letter (8.5 x11")**.

Media Sizes... button - Click this button to open the Media Sizes dialog enabling you to modify the sizes displayed in the "Application media size:" drop-down list.

Media Sizes dialog

- You can use the **Custom media size** settings of this dialog to set up a custom page size to display in the "Application media size:" drop-down list.
- Use the **Media mapping** drop-down list to specify how the custom media size will be mapped to the media rolls installed in the printer. If you select Any, Any ANSI, Any ARCH, or Any ISO, the Controller will select the smallest media size *in the specified media family* to print your job on. Automatic rotation of the job will be performed as needed. If you select Any Roll (the factory default setting), the Controller will select the smallest media roll that the job fits on. Automatic rotation of the job will be performed as needed.
- Use the **Available media sizes** check boxes to determine the media families to display in the "Application media size:" drop-down list. By default all boxes are checked (display set to on).

*Note: If the **User Defined Media** button is disabled, to access a working button go to "Start", "Settings", "Printers", right mouse click on your printer's icon, and select "Document Defaults" (NT4.0) or "Printing Preferences" (Windows 2000).*

- Use the **User Defined Media...** button to provide new media names, with accompanying sizes and media mapping, to the "Application media size:" drop-down list.

Media type: – Use the drop-down arrow to select your default media type from the displayed list. The factory default setting is **Bond**.

Media source: - This parameter displays the default media source. Use the drop-down arrow to select your default media source from the displayed list. The factory default setting is **Automatically Select**.

Orientation - Click on the appropriate radio button to select a default, printed document orientation. The factory default setting is **Portrait**.

Copy Count – Enter a number from 1 to 999 as your default number of document copies to print. The factory default setting is **1**.

Margin & Justification... button – This button opens the dialog used to set the margins and justification that the Controller uses to place your printed job on the media. The margins set here are used as the device margins by your software application. Margins can be set to zero to make the whole application media size the printable area, or left at their default of 0.20", which are the printer's recommended tolerances.

Tabs of the Document Properties Dialog (continued)

Job Tab

BANNER PAGE

This option allows you to determine whether a banner page is printed before or after your job. You can also select Printer Defaults to let banner page printing be determined by the parameters stored in the printer's Controller, as set up using the Web Printer Manager Tool. The default driver setting is **None**, meaning that no banner page is specified.

LABELING

This option allows you to determine if a plot label will be applied to your print job. You can select either **Printer default** or **User defined**.

Printer Default uses the default label stored in the Controller, if a default label was previously set up using the Web Printer Manager Tool.

If you select **User defined**, the **Settings...** button will be enabled. When you click this button, a Label dialog will display allowing you to create a label of 1048 characters in length. Using this dialog, label placement position, font type, font size, and text shading attributes can be individually set. Text shading has a range of 0% (white text) to 100% (solid black text).

The factory default setting for the Labeling option is **None** meaning that no label is specified by the driver.

RASTER STAMP

This option allows you to determine if a raster stamp will be applied to your print job. You can select either **Printer default** or **User defined**.

Printer Default uses the default raster stamp stored in the Controller, if a default stamp was previously set up using the Web Printer Manager Tool.

If you select **User defined**, the **Settings...** button will be enabled. When you click this button, a Raster Stamp dialog will display allowing you to select a known, Controller-resident stamp from the "Raster stamp name" drop-down list. If a list of Controller-resident stamps is not displayed, you can enter a

known stamp name of up to 32 alphanumeric characters in the "Raster stamp name" text box.

Using this dialog, raster stamp placement position, stamp rotation, and scaling attributes can be individually set. Scaling has a range of 10% to 999% in your choice of two options. Select the **Relative to drawing** radio button if you wish to have your stamp scaled in size to the plot image that it is being applied to. Select **Absolute** if you wish to have the scaling factor literally applied to the stamp file itself.

The factory default setting for the Raster Stamp option is **None** meaning that no stamp is specified by the driver.

Continued on next page.

Document Properties Dialog, Job Tab (continued)

FINISHING

Note: If you do not have a finishing device (folder) installed, "Folder bypass" will be displayed in gray and any other options will be unavailable for selection.

If you have an attached finishing device, and bi-directional communications are enabled in the driver (using the **Spool Settings...** button on the Details Tab), the finishing device will be automatically detected. When a finishing device has been detected by the driver, the drop-down list will enable you to select either **Printer default** or **User defined**.

Printer Default uses the default finisher settings stored in the Controller, previously set up using the Web Printer Manager Tool.

If you select **User defined**, the **Settings...** button will be enabled. When you click this button, a Finishing Options dialog will display allowing you to select the finishing program to use with your Finishing Device, override features of the finishing program, select an output bin, and to let the finisher know the location of the Title block in your document, if any. For an explanation of the individual dialog features, click the "?" key in the upper right corner of the dialog.

PLOT NESTING

This option allows you to determine if plot nesting will be applied to your print job. The purpose of Plot Nesting is to efficiently group the printing of plots on a single sheet of media to eliminate media waste. You can select either **Printer default** or **Single job**.

Printer Default uses the default plot nesting settings stored in the Controller, previously set up using the Web Printer Manager Tool. These pre-determined settings include: Exclusive nesting (i.e. reserved to a Single Job), Timeout, Margins (between nested plots), and maximum Nesting Length.

Single Job creates a plot nest restricted to the contents of your current job. Plots from other job sources will not be intermixed with plots from your job. If you select **User defined**, the **Settings...** button will be enabled. When you click this button, a Plot Nesting Options dialog will display allowing you to adjust the margins between printed images on your nested page.

MEDIA MISMATCH

Working with the Media Mismatch Mode parameters set up by your System Administrator using the Web Printer Manager Tool, you can select one of four available options to determine how you would like to handle mismatches between your job's media type, or size, and media types, or sizes, installed in the printer.

Printer Default uses the default plot nesting settings stored in the Controller, previously set up using the Web Printer Manager Tool (PMT). This is the default driver setting.

Scale To Fit will scale the size of your job to the nearest, printer-installed medium to your requested print size.

Block Printing will cause the printer to hold a media mismatched job until the proper medium has been installed in the printer. Depending upon how the System Administrator has set up the Mismatch parameters using the Web PMT, the mismatched job will either halt printing, or send the job to a mismatch queue for later recall and media size or type resolution.

Substitute Media will substitute a medium size or type on which to print the requested, mismatched job in either a 1 to 1 ratio or scaled to fit currently installed media. This is a "print at all costs" option.

Continued on next page.

Document Properties Dialog, Job Tab (continued)

JOB PRIORITY

This option lets you select a job processing priority. The range is from 1 to 10, with 1 representing a low priority job and 10 representing a high priority job. Higher priority jobs generally print faster in a print queue than lower priority jobs. Click on the up or down arrows to set your priority.

Tabs of the Document Properties Dialog (continued)

Graphics Tab

This Tab allows you to modify the driver settings for Scaling, Mirroring, and Rotation.

Scaling - Click on the radio button of your choice to select one of three available scaling options.

- **Printer default** - This selection uses the default scaling parameter stored in the Controller, previously set up using the Web Printer Manager Tool. This is the default driver setting.
- **To fit** - This selection automatically scales your image to fit the media size that you choose from the drop-down list to the right of the "To fit" radio button.
- **Fixed** - This selection scales your image by the percentage that you specify using the up or down arrows to the right of the "Fixed" radio button. Fixed scaling has a range of 10% to 999% in 1% increments.

Raster image scaling - Click on the radio button of your choice to select one of two available options to be used when raster images are scaled down.

- **Line** - This selection tells the Controller to use a pixel-preserving algorithm to preserve fine lines for image size reductions.
- **Photo** - This selection tells the Controller to use a simple pixel-depleting algorithm for image size reductions. This is the default driver setting.

Mirroring - Click on the check box of your choice to place a check mark in the box for the type of mirror image printing that you desire.

- **Mirror X** - This selection will mirror print your image along the horizontal access.
- **Mirror Y** - This selection will mirror print your image along the vertical axis.

Rotation - Click on the arrow to the right of the selection box to reveal a drop-down list of printed image rotation options.

- **Auto** - This selection lets the Controller determine printed image rotation for the most economical placement of document pages on available media. This is the default driver setting.
- **0, 90, 180, 270** - Any one of these selections produces printed image rotation to the degree specified.

Enable RTL native mode resolution - This box is checked (enabled by factory default) to have the Controller optimize resolution for your printed job. If you remove the check mark from this box, your image will be placed on the media using a 300 dpi coordinate system.

Tabs of the Document Properties Dialog (continued)

Monochrome Tab

Resolution - This selection box displays the driver's current resolution setting for jobs being sent to the printer. The factory default setting is **400 dpi**. You can click on the arrow to the right of the selection box to reveal a drop-down list including 200 dpi, 300 dpi, and 400 dpi. If you select a lower resolution than the factory default, the size of your print file will be smaller and the speed of printing will be faster. The quality of printing will be lower, however, with less image sharpness and detail.

Make all color black - If this option is enabled (with a check mark in the box), the driver will force all colors in your job to be printed in black, instead of being represented by grayscales. If this is desirable, use your mouse to place a check mark in the box. This option is disabled by factory default.

Removing the Driver

Note: If you are planning to remove the Net Port Monitor, as described on the next page, it is recommended that you remove the Net Port Monitor BEFORE removing the print driver as described below.

1. To remove the HP-GL/2/HP RTL Print Driver from your Windows 95/98/NT4.0/2000 desktop, click on "Start," "Settings," "Printers."
2. Right mouse click on the icon representing your XES Synergix 8825/8830/8850/8855 HP-GL/2 & HP RTL printer.
3. Select **Delete** from the drop-down menu.
4. Click **Yes** when prompted. This will remove the driver from your Windows operating system.
5. Refer to the Release Notes that accompanied the driver executable file for any additional files that you might wish to remove.

Removing the Net Port Monitor

Note: If you remove the print driver before removing the Net Port Monitor, the print driver icon will not appear in the "Printers" window when you select "Start," "Settings," and "Printers" from your desktop. To work around this problem, select any other printer icon as a substitute in step 2 below.

In Windows 95/98

1. From your Windows 95/98 desktop, click on "Start," "Settings," "Printers."
2. When the "Printers" window displays, right mouse click on the icon representing your XES Synergix 8825/8830/8850/8855 HP-GL/2 & HP RTL printer and select Properties.
3. When the "Properties" dialog displays, click on the Details Tab.
4. Use your mouse to select (highlight) a new port to attach your printer to, because you cannot delete a port if it is in use. Click **OK**.
5. Click **Delete Port...**
6. When the "Delete Port" dialog displays, click on (highlight) the port to be deleted and click **OK**.

In Windows NT4.0/2000

1. From your Windows NT4.0/2000 desktop, click on "Start," "Settings," "Printers."
2. When the "Printers" window displays, right mouse click on the icon representing your XES Synergix 8825/8830/8850/8855 HP-GL/2 & HP RTL printer and select **Properties**.
3. When the "Properties" dialog displays, click on the Ports Tab.
4. Use your mouse to select (place a check mark in front of) another port to attach your printer to, because you cannot delete a port if it is in use. Click **OK**.
5. Click on the icon representing your printer again and select **Properties**.
6. Click on the Ports Tab.
7. Use your mouse to highlight (but do NOT place a check mark in front of) the port you wish to delete.
8. Click **Delete Port...**
9. In response to the "Are you sure..." prompt, select **Yes**.

This page left intentionally blank.

This page left intentionally blank.

Prepared by:
Xerox Corporation
Global Knowledge & Language Services
800 Phillips Road
Building 845-17S
Webster, New York 14580-9791
USA

XEROX[®], XES Synergix 8855 and 8855 Digital Solution, XES Synergix 8850 and 8850 Digital Solution, XES Synergix 8825 and 8825 Digital Solution, XES Synergix 8830 and 8830 Digital Solution, XES Synergix Scan System, the digital box icon, AccXES, and the acronym XES are trademarks of XEROX CORPORATION.

©XESystems Inc. 2001. All rights reserved.

Printed in the U.S.A

701P36885

July 2001